

Job Name: _____

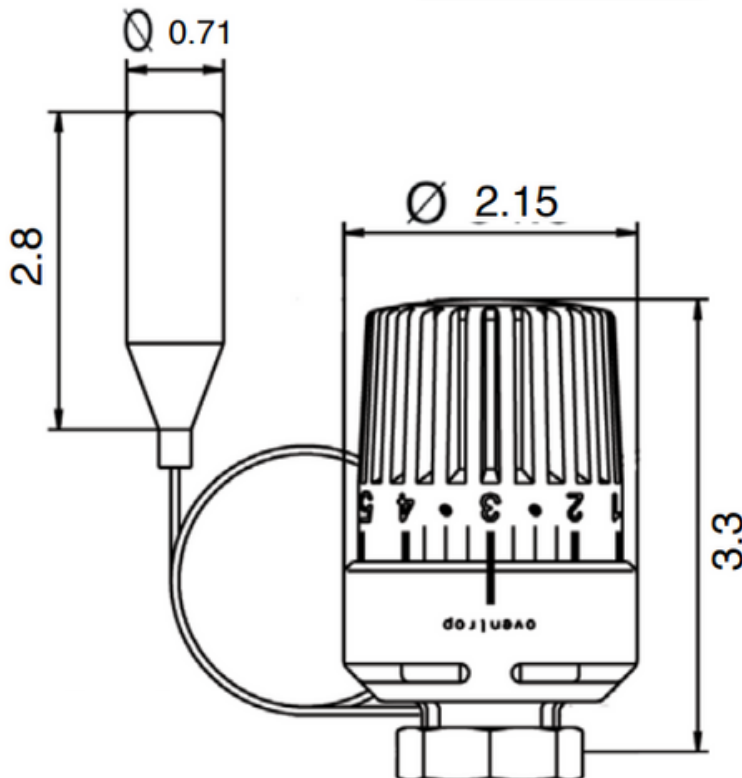
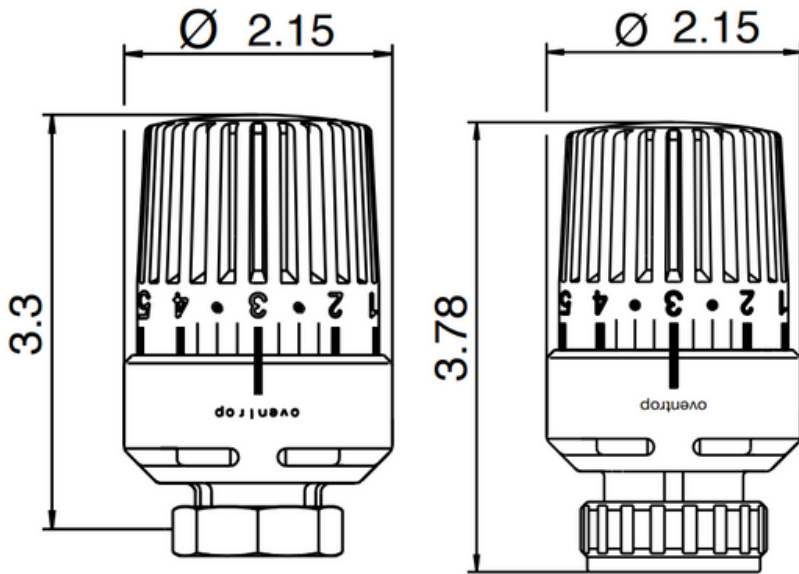
Submitted by: _____ Date: _____

Spec Section: _____

Job Location: _____

Engineer/Architect: _____

Approval: _____ Date: _____



Product Specifications:

The Oventrop Uni LH thermostat is a tamper-proof thermostat that can be internally limited or locked.

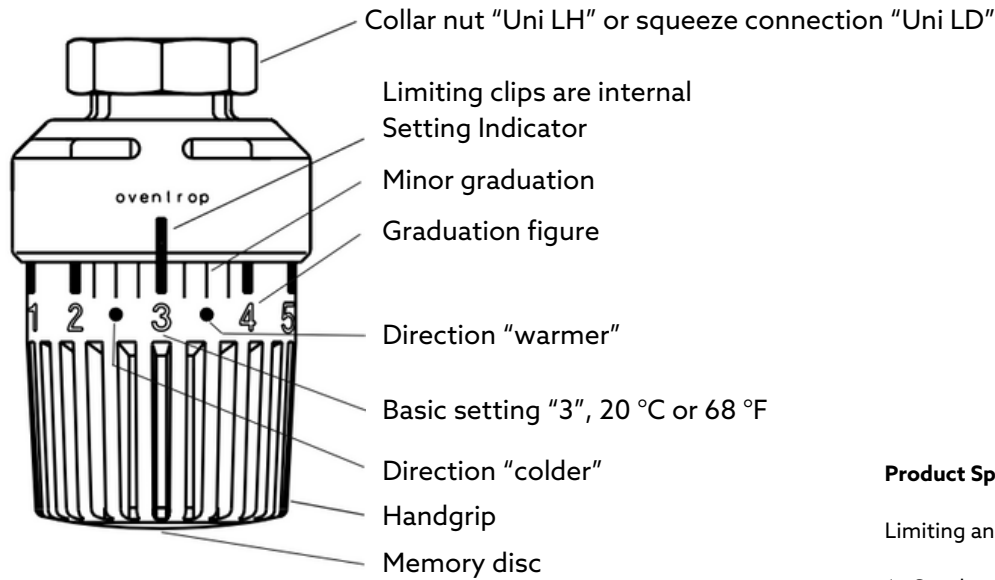
For vandal resistance on threaded models use item 101 17 66.

Materials:
Fiber reinforced nylon

Specifications:
Adjustment range: 45°F - 82°F (7°C - 28°C)
Settings: 0 $\frac{1}{2}$ 1 - 5
Sensor type*: Liquid
Ambient temperature range: 32°F-122°F
Maximum fluid temperature: 248°F

Items:		
Squeeze connection		101 14 75
M30x1.5 connection		101 14 65
as above but with remote sensor		
capillary	6.5 ft long	101 16 65
capillary	16 ft long	101 16 66
capillary	33 ft long	101 16 67

Figures and symbols on the thermostat



Temperature Settings

0 = isolation of the radiator

*= Frost protection symbol (in this position the valve opens automatically when room temperature drops below 7°C or 44°F.)

1 = 12°C or 54°F

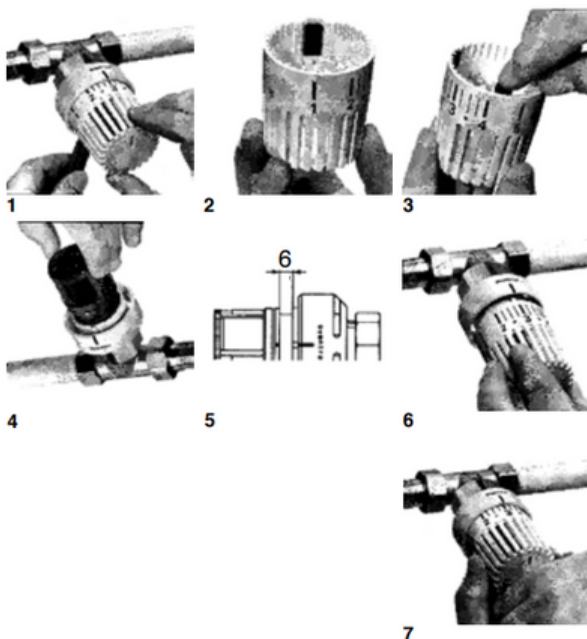
2 = 16°C or 61°F

3 = 20°C or 68°F

4 = 24°C or 75°F

5 = 28°C or 82°F

The minor graduations between the figures 2 - 4 represent a change of room temperature of 1°C or about 2°F.



Product Specifications:

Limiting and locking instructions

1 - Set the thermostat to "3". Insert Uni LH tool (198 91 00) into the hole on the back side and twist the thermostat closed. This will remove the cap.

2 - Remove the two black stops.

3 - To set a high limit place the black stop so that is directly to the upper side of the desired setting limit. To set a low limit place the black stop so that is directly to the lower side of the desired setting limit.

4 - Ensure that the white mark on the bellows is aligned with the setting indicator on the thermostat base.

5 - When properly aligned, the space between the bellows and the thermostat base should be approximately 6 mm.

6 - Ensure that the cap setting "3" is aligned with the setting indicator and place cap on thermostat base.

7 - Push cap on until it clicks in place. You should not be able to remove the cap at this point without the tool.